



GARDEN VIEW TOWNS

AT THE MILL LANDING

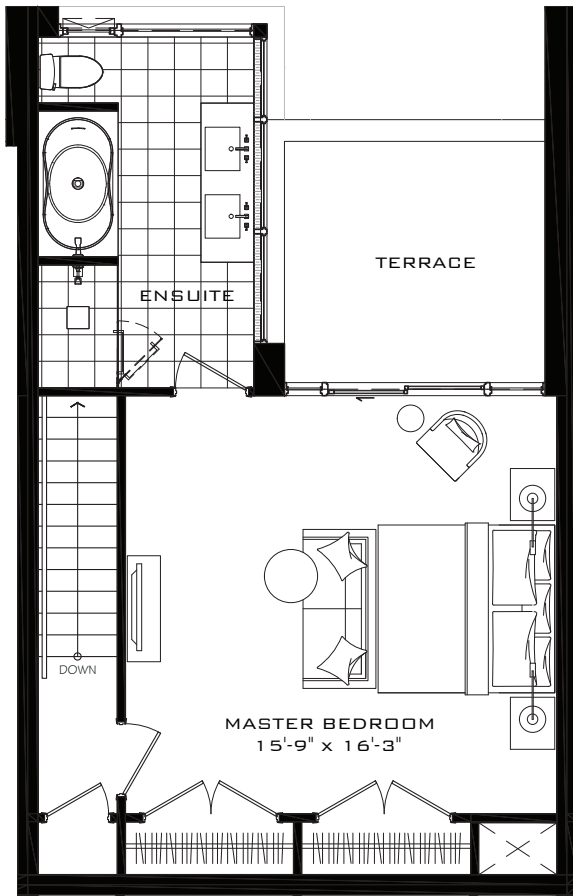
GARDEN VIEW 2

3 BEDROOM + DEN 1,739 SQ.FT.

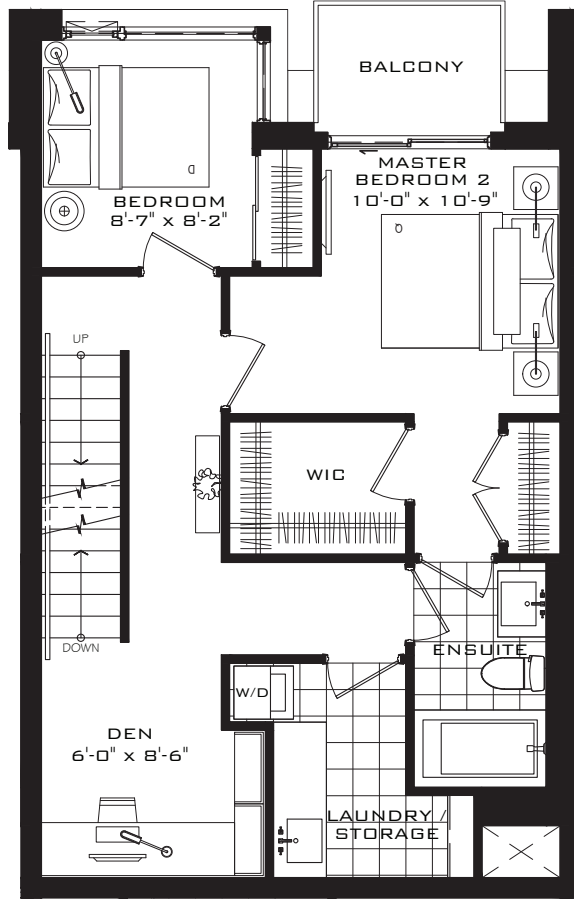
GROUND FLOOR TERRACE 170 SQ.FT.

SECOND FLOOR BALCONY 30 SQ.FT.

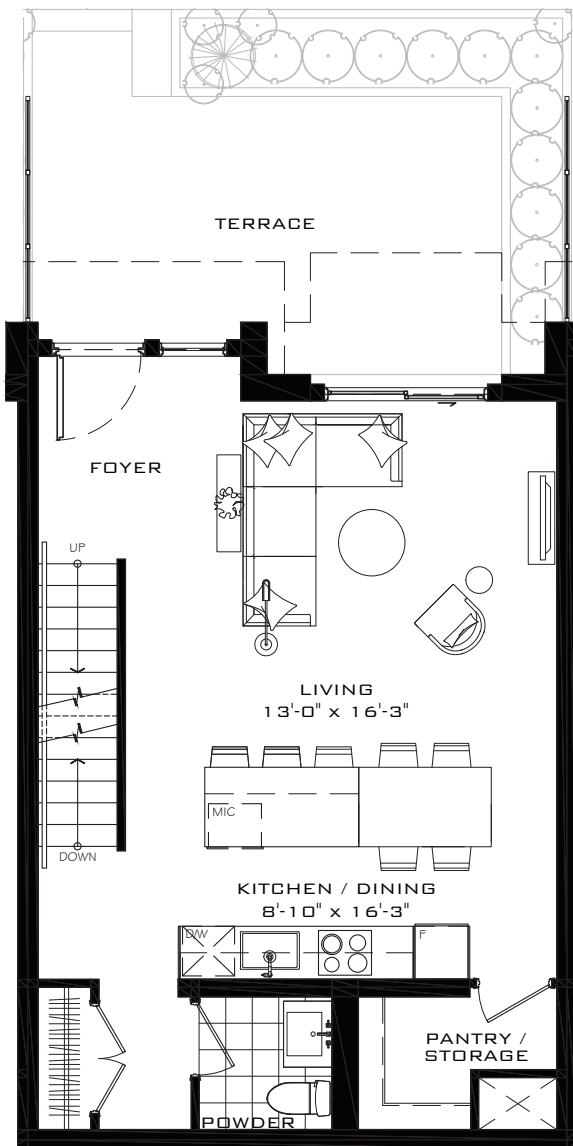
THIRD FLOOR TERRACE 85 SQ.FT.



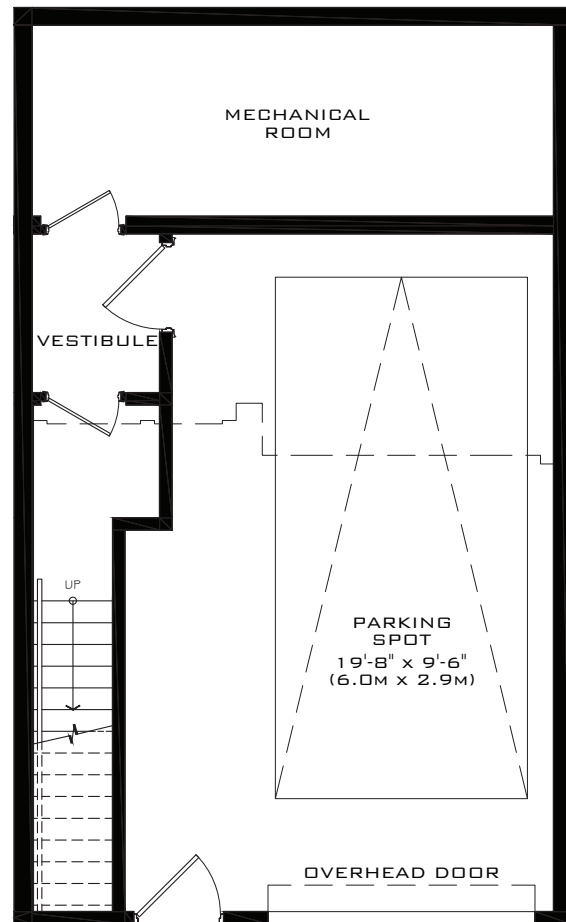
TOWNHOUSE 02, 03, 04, 05 & 06
THIRD FLOOR - 521 SQ. FT.



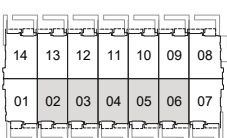
TOWNHOUSE 02, 03, 04, 05 & 06
SECOND FLOOR - 621 SQ. FT.



TOWNHOUSE 02, 03, 04, 05 & 06
GROUND FLOOR - 597 SQ. FT.



TOWNHOUSE 02, 03, 04, 05 & 06
BASEMENT - 703 SQ. FT.



All areas and stated room dimensions are approximate. Floor area measured in accordance with Tarion requirements. Actual living area will vary from floor area stated. Furniture not included. Plan may be reversed. All illustrations are artist's concept. E. & O.E. July 2021.